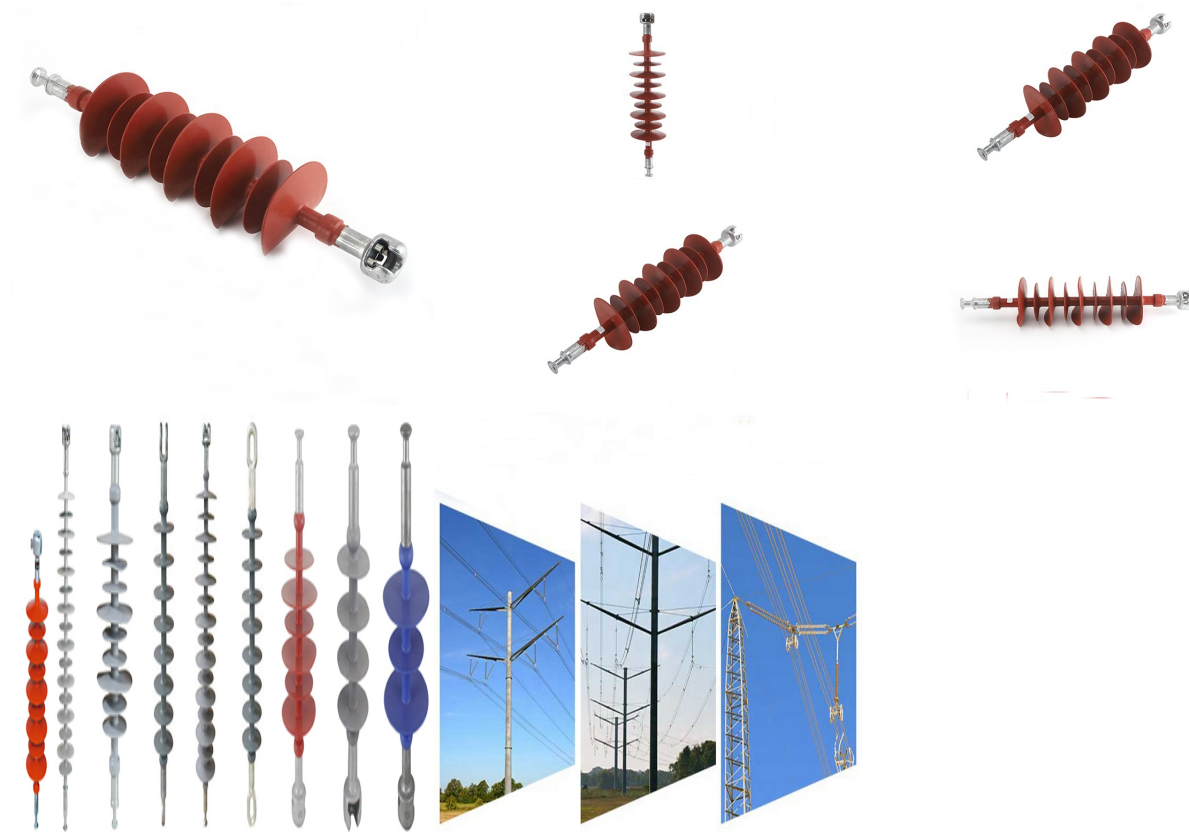


---

# 10KV 70/100KN polymer composite suspension ball and socket suspension insulators FXBW4-6(10)/70(100)



Overview

Quick Details

Place of Origin:

Zhejiang, China

Brand Name:

LEQI

Model Number:

FXBW4-6(10)/70(100)

Type:

Insulator, Insulated Slewing

Material:

Silicone, Composite polymer

Application:

High Voltage

---

Rated Voltage:  
6-10KV

Tensile Strength:  
70/100

Product name:  
Composite suspension Insulator FXBW4-6(10)/70(100)

Rated voltage:  
6-10 KV

Rated frequency:  
50Hz

Usage:  
Electrical Insulation Protection

Color:  
red/grey/customized

Keywords:  
insulator

Feature:  
High mechanical Strength; heat resistant, light weight and etc

Certification:  
ISO 9001

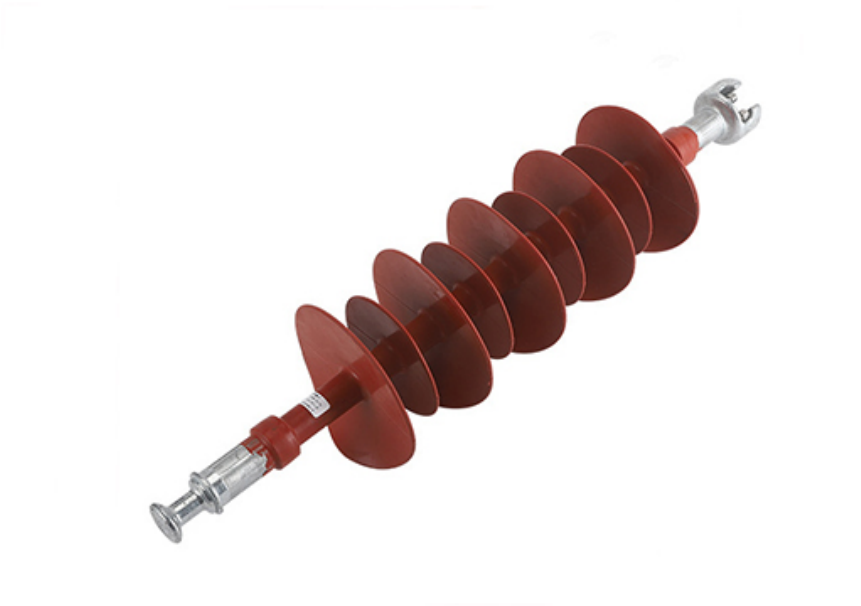
Product Description

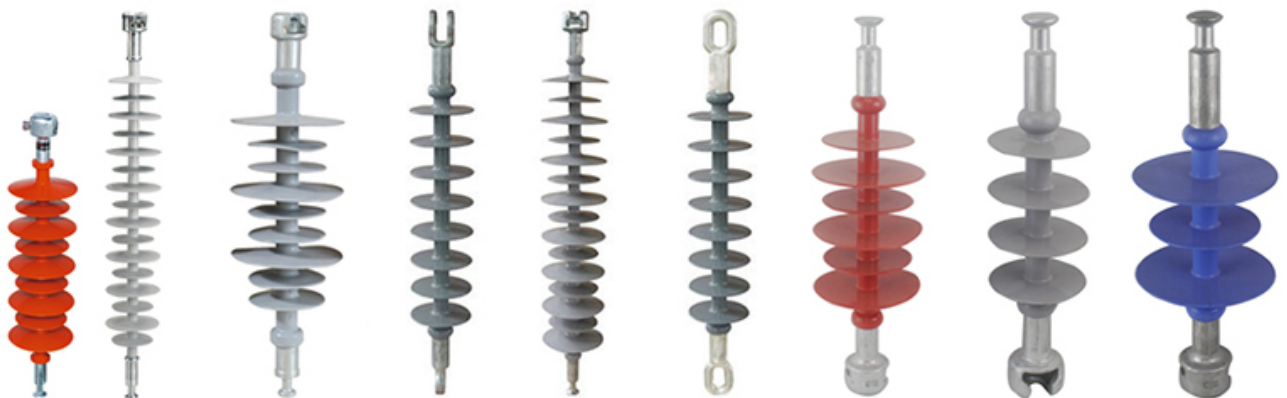




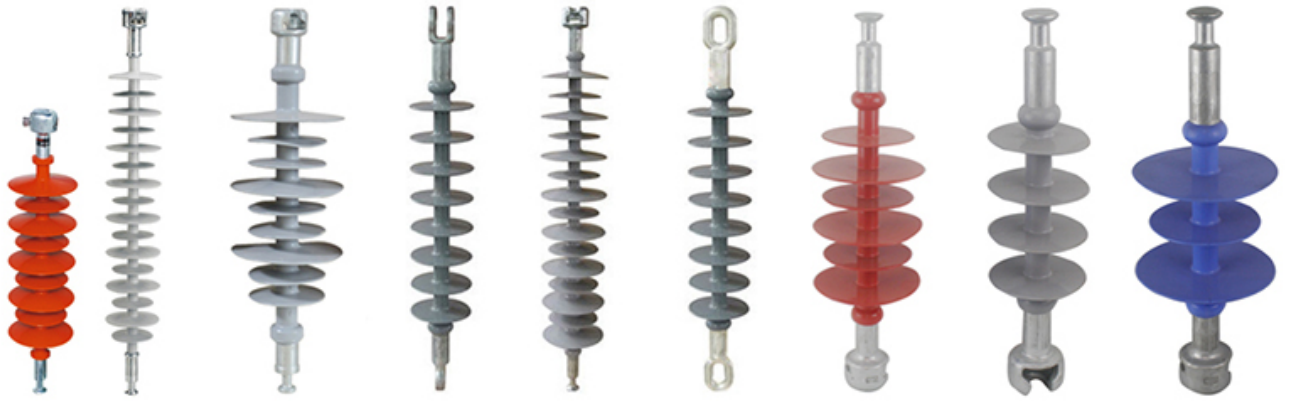










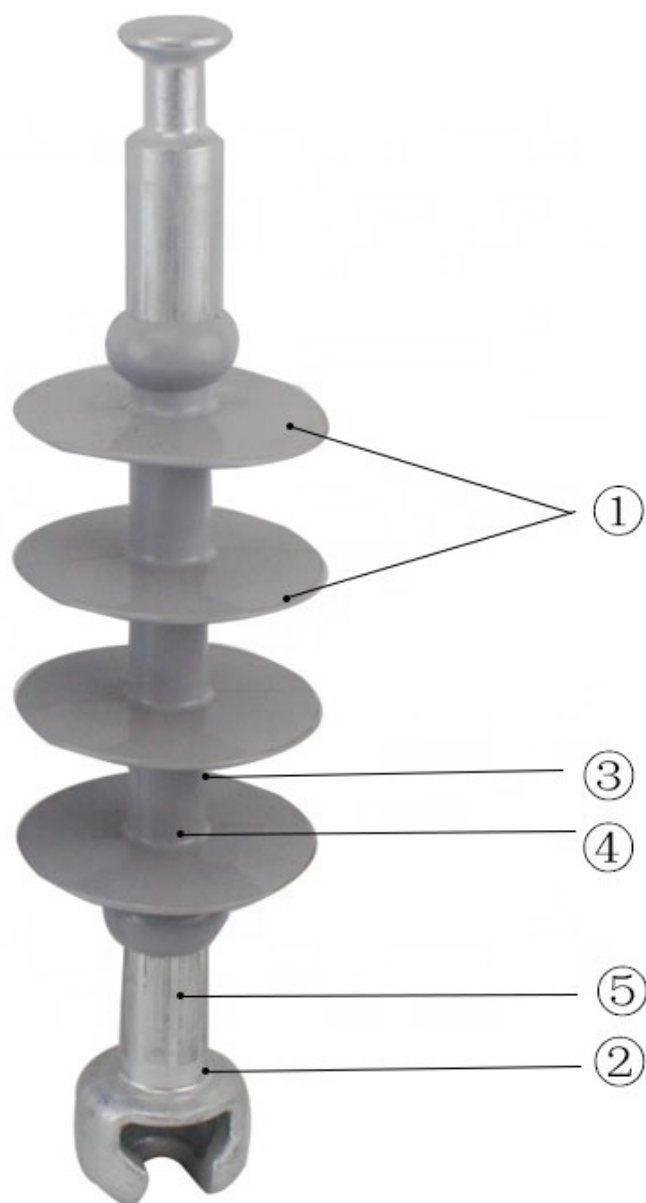


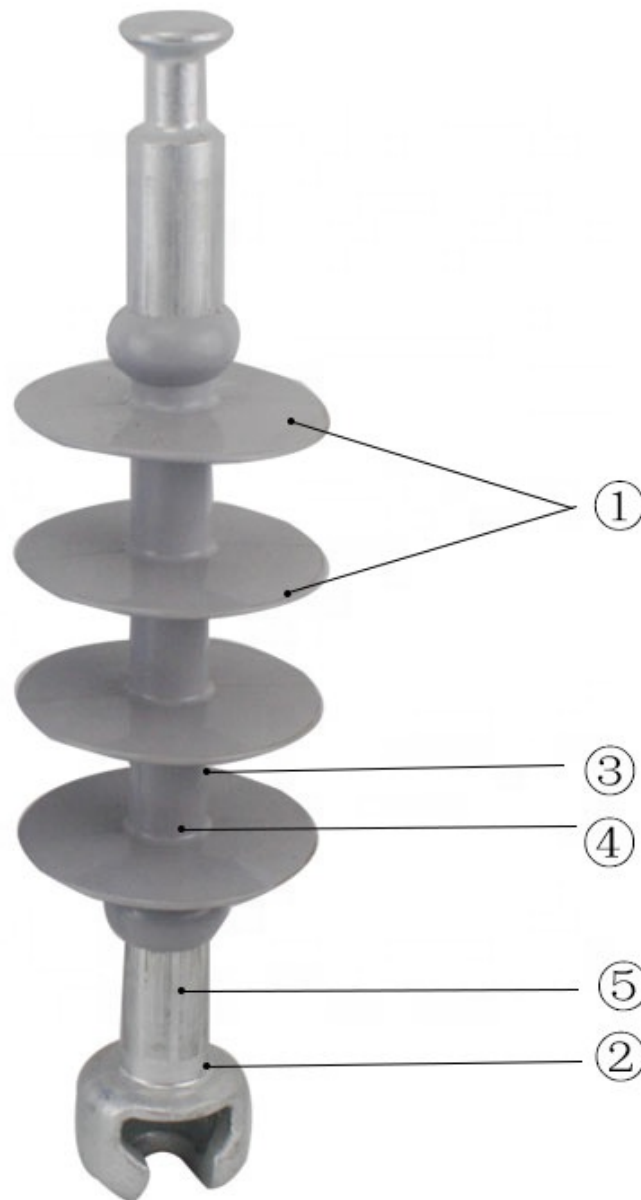












Composite Suspension Insulator—Socket Insulator  
 ① Shed connected with core by integral forming  
 ② Metal end fittings, core and sheds connected by new crimping process

③ The thickness of housing > 3mm, uniform thickness, confirm to IEC Standard

④ Acid resistant, high temperature resistant of epoxy fiberglass core

⑤ The material of metal end fittings is used with hot galvanization and technology of rare earth aluminum coating to avoid coating shedding when crimping, prolonging the service life of the product.

Model	Rated voltage (KV)	Rated me	Structural	Insulation	Minimum	Shed	Lightning	1 min wet
-------	--------------------	----------	------------	------------	---------	------	-----------	-----------

		chanical bending load (KN)	height (mm)	distance( mm)	nominal creepage distance (mm)	diameter (mm)	impulse voltage (KV)	Power frequency withstand voltage (KV)
FXBW4-6/70	6	70	270±5	80	260	148/118	60	25
FXBW4-10/70	10	70	310±5	175	425	125/95	95	42
FXBW4-10/100	10	100	367±5	220	460	125/95	95	42
FXBW4-35/70	35	70	670±5	490	1350	138/28	230	95
FXBW4-35/100	35	100	670±5	450	1320	148/114	230	95
FXBW4-66/70	66	70	870(940)±15	710	2248	148/118	410	185
FXBW4-66/100	66	100	870(940)±15	710	2248	148/118	410	185
FXBW4-110/100	110	100	1240(1440)±15	1000(2080)	3150(3860)	148/118	550	230
FXBW4-110/160	110	160	1340±15	1000	3380	148/118	550	230
FXBW4-145/120	145	120	1480±30	1240	4123	148/118	725	355
FXBW4-220/100	220	100	2240(2350)(2470±30)	2020(2080)(2210)	6450(6760)(7150)	148/118	1000	395
FXBW4-230/160	230	160	2990±30	2600	9075	148/118	1425	570
FXBW4-220/210(160)	220	210/160	2350±30	2000	6800	158/128	1000	230
FXBW4-330/210(160)	330	210/160	2930±30	2650	8790	158/128	1425	570
FXBW4-500/210(160)	500	210/160	4450±30	4075	14860	195/158/128	2050	740

#### Specification

Product Name: 10KV Composite suspension Insulator Model: FXBW4

Manufacture and test Standard: IEC, ANSI, GB

#### Materials:

- 1) Silicon Rubber for sheds/ housing
- 2) Glass-fiber reinforced epoxy resin rod (ECR type) for core
- 3) Hop DIP galvanized cast steel for metal fittings



### CONTACT WITH US:

E-mail : sales2@chinaleqi.com

sales1@chinaleqi.com

Mobile phone : 0086-13968763016

WhatsApp : 0086-13968763016

Wechat : 0086-13968763016



Product

link :

<https://www.leqielectric.com/10kv-70100kn-polymer-composite-suspension-ball-and-socket-suspension-insulators-fxbw4-61070100-product/>